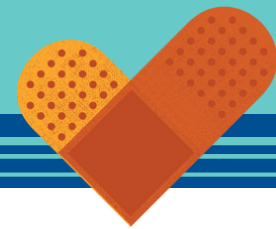
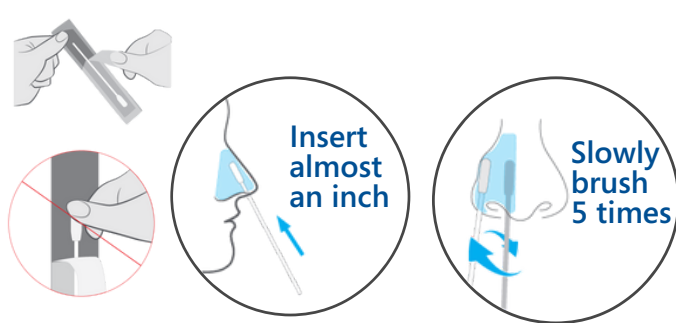


COVID-19 Self-Test Instructions

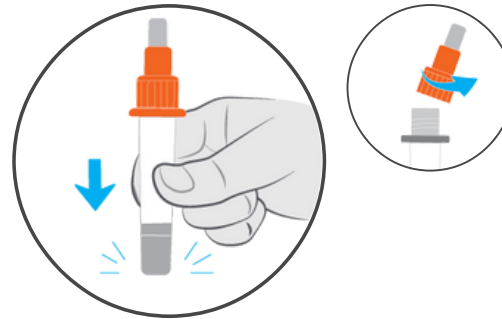


1 Collect Sample



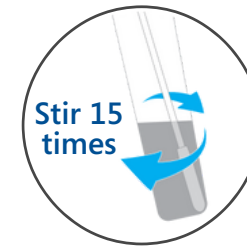
Brush in a circle. **Repeat on the other nostril using the same swab.**

2 Process Sample



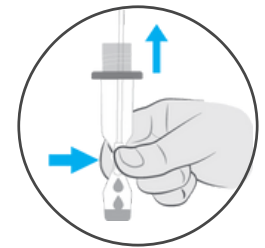
Tap the tube on the table.

3



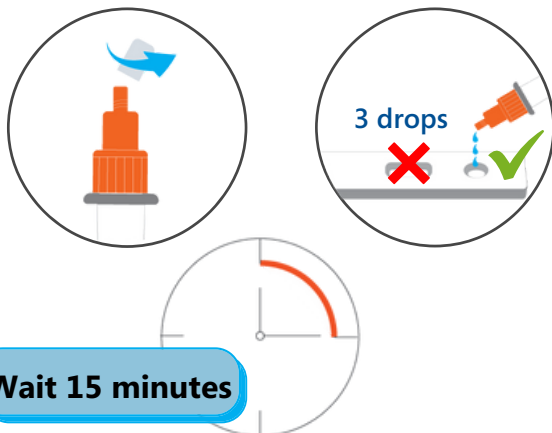
Insert the swab into the tube until it touches the bottom.

4



Squeeze all liquid out of the swab. Remove swab. Put swab back into the package. Safely throw away.

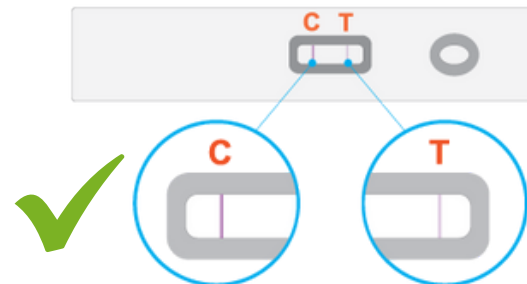
5 Add Sample



Wait 15 minutes

Open the COVID-19 test card. Add **3 drops** to the test card. Do not touch the hole.

6 Read Result



If you see a **C line** great job. The test is valid. Look for both a C and a T line. Do not read results **before 15 minutes** or **after 30 minutes**.

7 Test Result Explanation

Positive result must show a **C line** and a **T line**.



Negative result will only show a **C line**.



Invalid result will only show a **T line** or **no line**.

